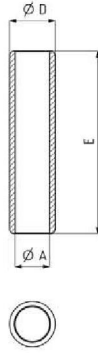


921-M

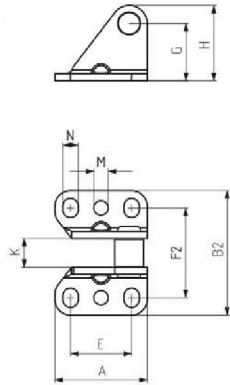
Metal Sap
Metal Handle



KOD	MODEL NO	A	D	E
921-1-2-M	110-210-310-410 510 710-810-1-2	11,5	16	60
921-1-2-M-C1	222-232-820-2	11,5	16	110
921-3-M	110-210-310-410 510-710-810-3	12	18	80
921-3-M-C1	222-232-240-4	12	18	130
921-4-M	110-210-310-410 510-4	19	25	100
921-4-M-C1	222-232-240-6	19	25	150

961

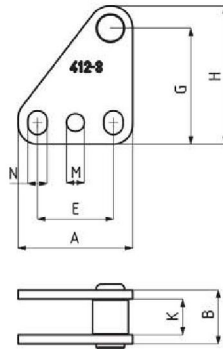
Gerdirme Parçası
Stretcher Parts



KOD	MODEL NO	PASLANMAZ (STAINLESS)	SİYAH (BLACK)	A	E	G	H	K	M	N	F2	B2
961-2	411-2	S 961 - ...	B 961 - ...	31	12 - 18	26	31,5	10		6x9,5	30,5 - 34,5	47
961-3	411-3	S 961 - ...	B 961 - ...	38,5	19 - 25	24	31,5	12		7x10	36,5 - 38	52
961-4	411-4	S 961 - ...	B 961 - ...	50	30	40	49	16	Ø 8,5	10,5x15	56 - 65	84

962

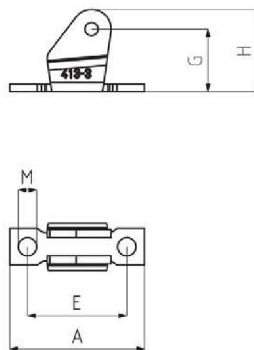
Gerdirme Parçası
Stretcher Parts



KOD	MODEL NO	PASLANMAZ (STAINLESS)	SİYAH (BLACK)	A	B	E	G	H	K	M	N
962-2	412-2	S 962 - ...	B 962 - ...	31	15	12 - 18	40	45,5	10		6x9,5
962-3	412-3	S 962 - ...	B 962 - ...	38,5	18	19 - 25	39	46,5	12		7x10
962-4	412-4	S 962 - ...	B 962 - ...	50	24	30	67	76	16	Ø 8,5	10,5x15

963

Gerdirme Parçası
Stretcher Parts



KOD	MODEL NO	PASLANMAZ (STAINLESS)	SİYAH (BLACK)	A	E	M	G	H
963-3-03	413-3	S 963-3 - ...	B 963-3 - ...	51,5	38	Ø 7	24	31,5